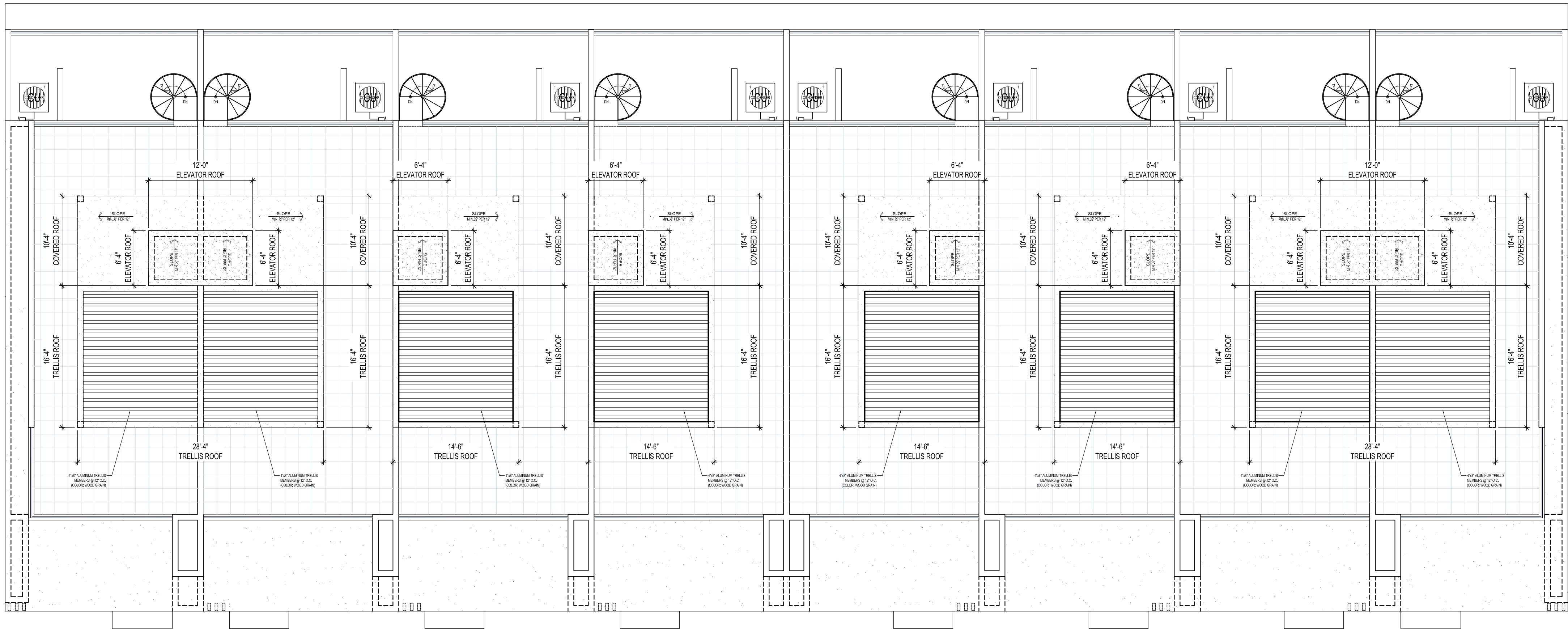


C:\Users\Tiffany\OneDrive\Dropbox\INTELA\PROJECTS\2000\#2009 - 3305 SE 5th STREET TOWNHOMES - POMPANO BEACH\#2009 - 3305 SE 5th STREET TOWNHOMES - POMPANO BEACH - ALL 3 STORY UNITS.dwg, 3/2/2026 11:11:09 AM, AutoCAD



ROOF PLAN  
SCALE: 1/8" = 1'-0"

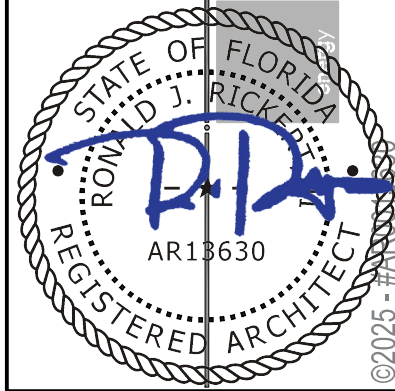
ROOF PENETRATION NOTE

ALL ROOF PENETRATIONS SHALL BE IN CENTER THIRD PART OF FLAT ROOF PORTION WHEN POSSIBLE TO REDUCE FROM FIELD OF VIEW. GENERAL CONTRACTOR SHALL COORDINATE WITH PLUMBING & MECHANICAL SUBCONTRACTOR PRIOR TO START OF WORK.

DRC

PZ25-12000046  
04/15/2026

#25009

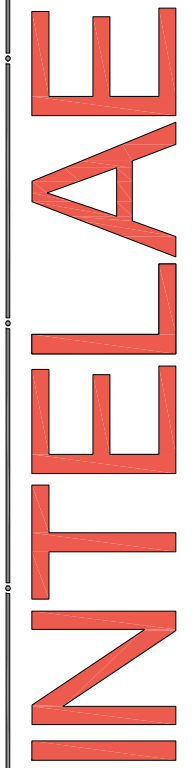


REVISIONS:  
DRC ZONING REVIEW  
DRC ZONING RESUBMITTAL

12-1-2025  
3-2-2026

S.E. 5TH STREET TOWNHOMES  
FOR: MARSAL MAINTENANCE CORP.  
3305 S.E. 5TH STREET  
POMPANO BEACH, FL 33062

architecture + energy of intelligence



offices: 561.672.7124 website: intelae.com  
1615 south federal highway + suite 206  
boca raton + florida + 33432

A3.0